

# vygonvet

PRODUCT FOCUS



# WHY CHOOSE VYGON?



OVER  
**60**  
YEARS  
EXPERIENCE

**PATIENT CARE**  
LIES AT THE HEART  
OF WHAT WE DO



**CLINICAL**  
EXPERTISE



**PLANET  
MARK**  
CERTIFIED  
BUSINESS

MORE THAN  
**100 MILLION**  
PRODUCTS IN  
**110 COUNTRIES**



# CONTENTS

Why choose Vygon? \_\_\_\_\_ 2

About Vygon Vet \_\_\_\_\_ 3

Our commitment to the environment \_\_\_\_\_ 3

Needle-free devices \_\_\_\_\_ 4

IV management \_\_\_\_\_ 8

CVCs \_\_\_\_\_ 10

Regional nerve blocks \_\_\_\_\_ 12

Cannula \_\_\_\_\_ 14

Mostcare Up \_\_\_\_\_ 15

Custom packs \_\_\_\_\_ 16

Oncology \_\_\_\_\_ 18

Oncology PPE \_\_\_\_\_ 19

Nutrisafe2 \_\_\_\_\_ 20

Theatre \_\_\_\_\_ 24

Aitecs infusion pumps \_\_\_\_\_ 28

# OUR SERVICE OFFERING



## Customer Service & Technical Support

Talk through your enquiry with our  
dedicated Teams.



## Education & Training

We offer our customers a variety of  
valuable and comprehensive training  
options to help you and your teams  
meet your training requirements.

This Product Focus features a selection  
of our products.

Visit [vygonvet.co.uk](http://vygonvet.co.uk) for our full range.



A leading supplier of single-use veterinary consumables for more than 20 years, Vygon Vet has built an enviable reputation for high quality products and excellent customer service.

Working closely with practice teams focused on delivering the best care for their patients, our priority is to tailor our products and support to ensure surgical procedures run smoothly and efficiently, treatments and therapies deliver faster with better recovery. This philosophy is behind the success of all our products including the popular needle-free IV access system Bionector, atraumatic long term feline urinary catheter Katkath and Custom packs.

In addition, we also focus on supporting practices to push through treatment boundaries and benefit from innovation. Ground-breaking products include the Plexygon Nerve Stimulator, to access the patient benefits of regional anaesthesia, and Qimono, our closed system transfer device, which provides protection for veterinary teams whilst delivering life-saving chemotherapy.

Vygon Vet is a division of leading healthcare and medical products supplier Vygon (UK) Ltd.

## OUR COMMITMENT TO THE ENVIRONMENT

Vygon UK has been working towards creating a sustainable future for many years and we are a Carbon Neutral Company. We believe that sustainability isn't just about meeting current needs, but more importantly, it is about ensuring we are here for the long term and are paving the way for a bright tomorrow. We strive to deliver enhanced Corporate Social Responsibility (CSR), ensuring we manage the social, economic, and environmental effects of Vygon UK's operations responsibly in line with public expectations.



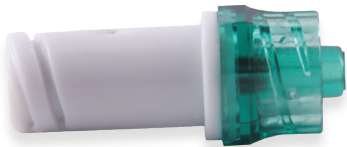
DISCOVER OUR JOURNEY  
scan with your smart device



# NEEDLE-FREE DEVICES

## Single bionector®

Code	Description	Box qty
00089603	bionector closed system needle-free device	50



## bionector® T-Piece

Allows intermittent injection via latex-free membrane during simultaneous infusion.

Code	Description	Box qty
1VTUSBN-448	10cm luer-lock T-piece extension connector with bionector	50



## bionector® T-piece with two needle-free access ports

Totally needle-free T-piece device, reduces risk of needle-stick injuries to both patients and staff, as well as reducing the risk of infection.

Code	Box qty
1VTUSBN-450	50



## bionector® vial caps

For use when aspirating drugs from capped vial and drug reconstitution.

Code	Size (mm)	Box qty
00082101	14	50
00082102	20	50

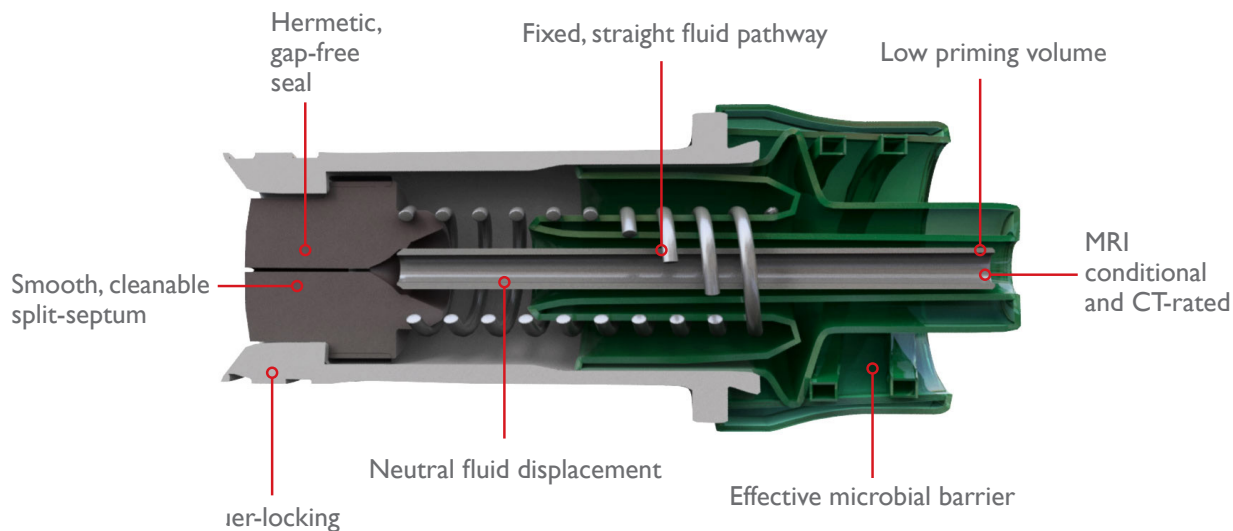


## bionector® and bag spike

Code	Box Qty
00085611	50







## Exceeding global opinion leaders' recommendations

An established market-leading needle-free device which meets the full range of global opinion leaders' recommendations for reducing CRBSIs. It has been proven to provide an effective barrier against microbial ingress and help standardise practice by combining a fixed, straight fluid pathway with innovative neutral displacement technology.

## MRI conditional and CT-rated

Bionector is proven not to represent any risk to either patients or practitioners during an MRI of up to three Teslas. CT-rated for use with power injectors, Bionector has a maximum pressure resistance of 350psi and a maximum flow rate of 10mL/s.

## Neutral displacement

Leading the way with a neutral fluid displacement, a specific post-flushing clamping sequence is not required. This helps prevent blood reflux and reduce catheter occlusions.

## Clinically proven

Backed up by a robust library of clinical studies Bionector is proven to be easy to clean and clear. Its smooth split-septum fits tightly into the device housing ensuring it is free from any gaps. The straight, fixed fluid pathway has been proven 'easy to clear', designed to provide the most direct and least tortuous route with no moving parts (such as mechanical valves), which reduces the surface area available for biofilm formation.

## Low deadspace

The straight fluid pathway is proven 'flushable' for macro and microscopic particles such as blood. This is due to a minimal deadspace of just 0.018mL allowing for a low flushing volume (5mL) to clear the device.



# NEEDLE-FREE DEVICES

## bionector® octopus double lumen

Octopus needle-free extension set, including double lumen Bionector octopus extension with 10cm tube and clamp PUR.

Code	Length (cm)	Flow rate (mL/min)	ID (mm)	OD (mm)	Box qty
000841264	10	100	1.5	2.5	50



## bionector® octopus double lumen with two anti-reflux valves

Octopus needle-free extension set, including double lumen Bionector octopus extension and two anti-reflux valves with 0.4mL capacity.

Code	Length (cm)	Flow rate (mL/min)	ID (mm)	OD (mm)	Box qty
000841232	3	120	1.5	2.5	10



## bionector® octopus triple lumen

Octopus needle-free extension set, including triple lumen Bionector octopus extension with 10cm tube and clamp PUR.

Code	Length (cm)	Flow rate (mL/min)	ID (mm)	OD (mm)	Box qty
000841364	10	100	1.5	2.5	10



## bionector® octopus triple lumen with three anti-reflux valves

Octopus needle-free extension set, including triple lumen Bionector octopus extension and three anti-reflux valves with 0.4mL capacity.

Code	Length (cm)	Flow rate (mL/min)	ID (mm)	OD (mm)	Box qty
000842312	3	120	1.5	2.5	10



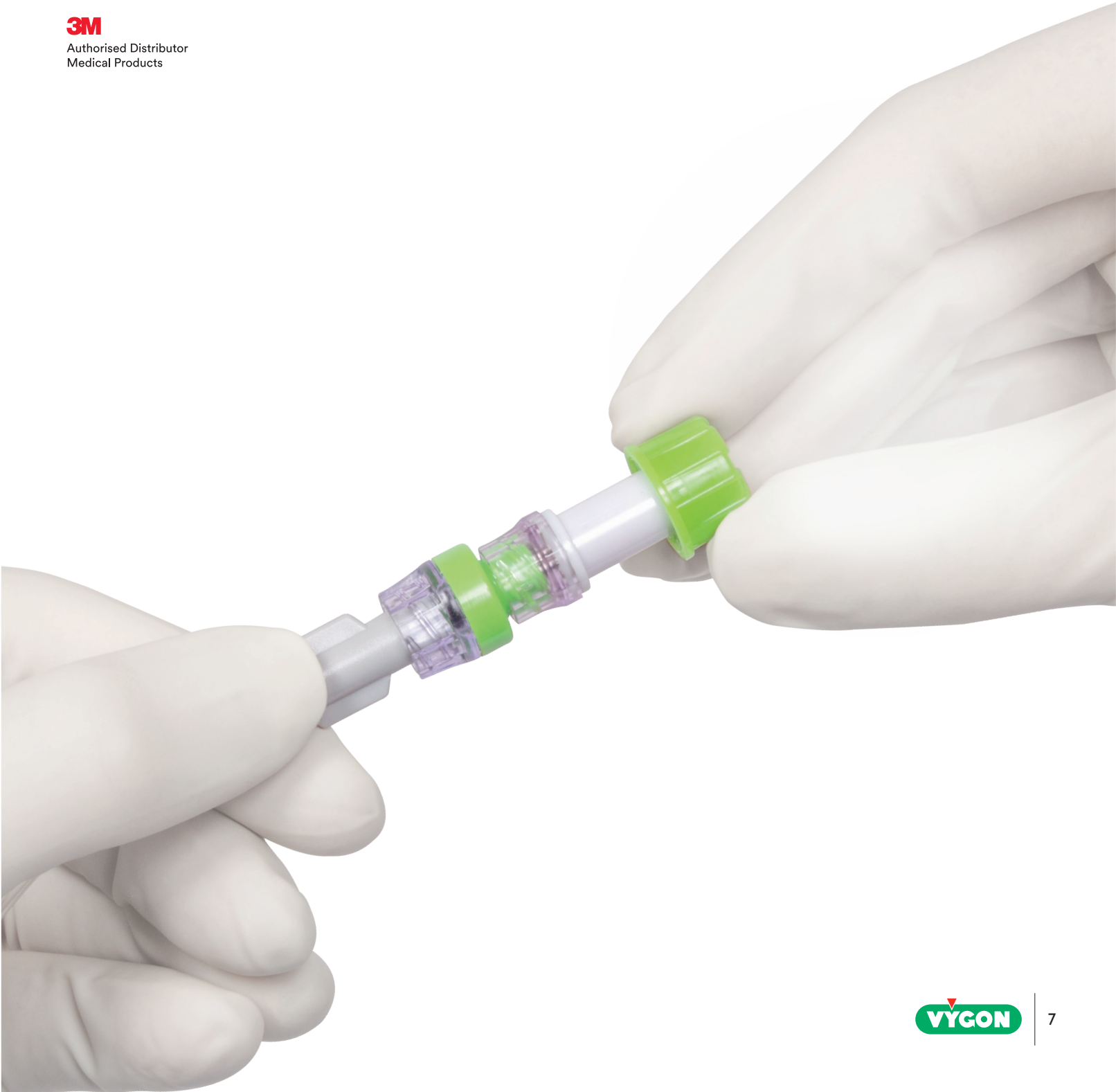
## 3M™ Curosin™ disinfecting port protectors

A disposable passive disinfection device. Curosin port protectors ensures needle-free access devices are always clean, therefore removing the need to actively disinfect before and after each access.

Code	Description	Box qty
VWJIM001-270	Curosin™ disinfecting port protector compact patient box	30

Curosin™ is a trademark of 3M Company.

**3M**  
Authorised Distributor  
Medical Products



# IV MANAGEMENT

## lectrocath

lectrocath 50cm micro bore male/female luer-lock PE extension set.

Code	Length (cm)	Capacity (mL)	ID (mm)	OD (mm)	Box qty
00115505	0.7	2.0	50	1.0	50



## lectrospiral








Coiled IV extension line in polyurethane with luer-lock connectors.

Code	Length (cm)	Capacity (mL)	ID (mm)	OD (mm)	Box qty
00115560	100	1.2	1.0	2.0	15
00115565	150	1.6	1.0	2.0	15
00115570	200	2.0	1.0	2.0	15
00115580	300	2.9	1.0	2.0	15
00115590	400	3.8	1.0	2.0	15
00115960	100	2.0	1.5	2.5	15
00115965	150	2.8	1.5	2.5	15
00115970	200	3.6	1.5	2.5	15
00115980	300	5.2	1.5	2.5	15
00115990	400	6.9	1.5	2.5	15



## microflex

Silicone-coated needle with double wings.

Code	Colour	Size (G)	OD (mm)	Length (cm)	Box qty
000246044		27	0.4	30	100
000246054		25	0.5	30	100
000246064		23	0.6	30	100
000246074		22	0.7	30	100
000246084		21	0.8	30	100
000246094		20	0.9	30	100
000246114		19	1.1	30	100

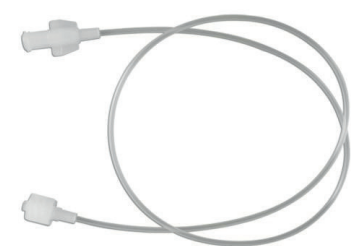




### v-green IV extension line

PE extension line with male to female luer-lock connections. Narrow bore to minimise priming volume, ideal for drug infusion in animals of all sizes.

Code	Length (cm)	Capacity (mL)	ID (mm)	OD (mm)	Box qty
07110005	50	0.7	1.0	2.0	50
07110010	100	1.2	1.0	2.0	50
07110015	150	1.6	1.0	2.0	50
07110020	200	2.0	1.0	2.0	50
07110105	50	1.1	1.5	2.5	50
07110110	100	2.0	1.5	2.5	50
07110115	150	2.8	1.5	2.5	50
07110120	200	3.6	1.5	2.5	50



### vyclic three-way stopcock

Lipid resistant, lockable three-way stopcock in PC-PE, with one rotating male luer and two female luer-lock ports. Colour-coded plugs for venous or arterial identification, and the handle position indicates open ports.

Code	Description	Box qty
087620	Lockable three-way stopcock in PC-PE	50



### protect-a-line extension line

Code	Length (cm)	Capacity (mL)	ID (mm)	OD (mm)	Box qty
00083201	150	1.4	1.0	2.5	50
000832211	200	1.3	1.5	3.0	50



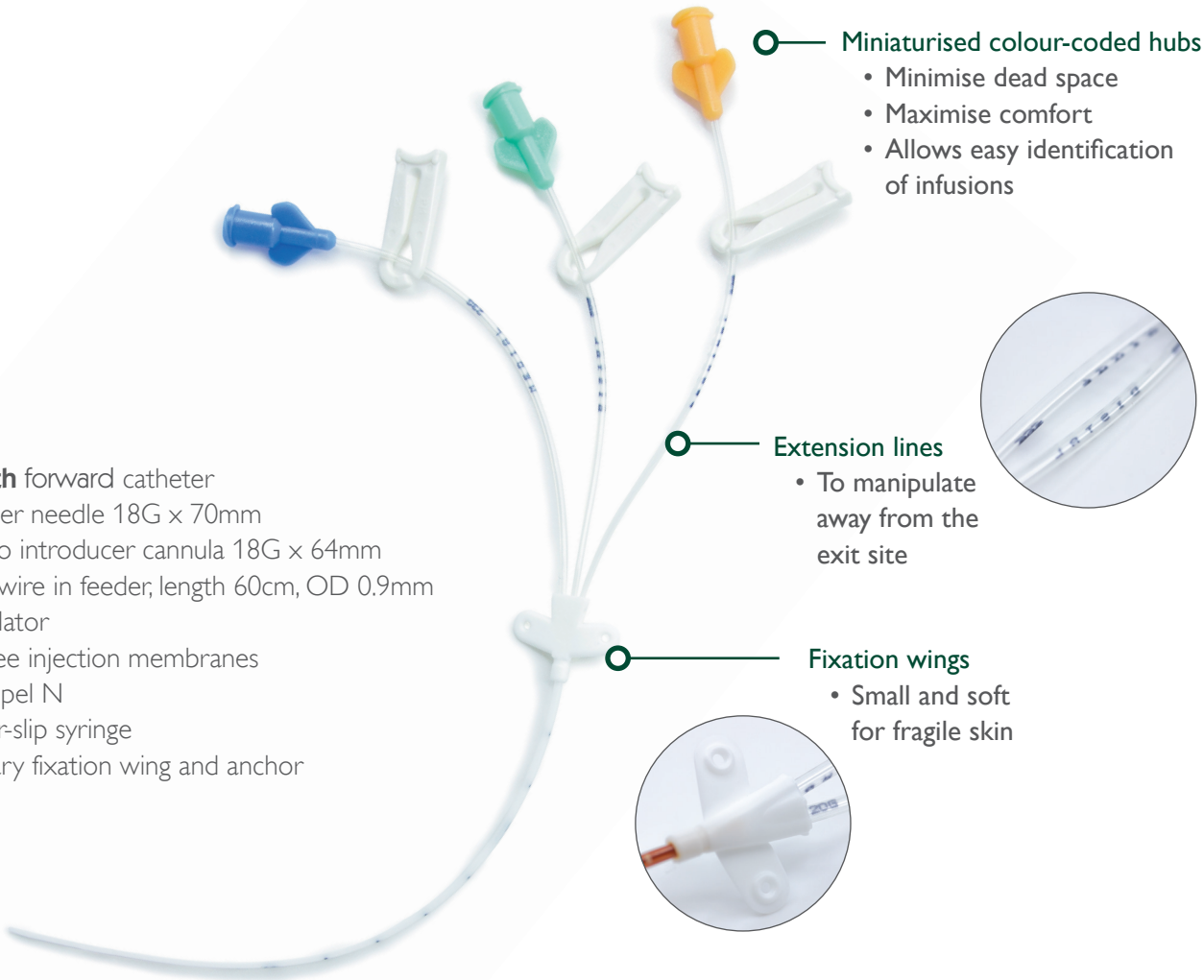
CVCs

multicath® forward

Radiopaque multi-lumen central venous catheter with flexible tip. 1cm graduations start at 9cm from the distal tip. Each lumen has a different hub colour to aid identification. The guidewire feeder aids insertion whilst still allowing the user to sense any resistance. Each kit includes an introducer needle and a short PTFE cannula to give the user clinical choice for insertion.

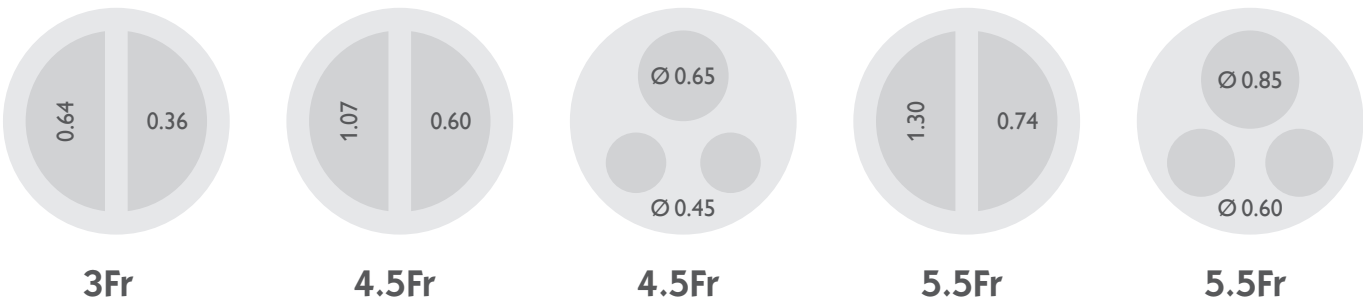
Contents:

- 1 x multicath forward catheter
- 1 x Introducer needle 18G x 70mm
- 1 x Mosquito introducer cannula 18G x 64mm
- 1 x "J" guidewire in feeder; length 60cm, OD 0.9mm
- 1 x Vessel dilator
- 2 x Latex-free injection membranes
- 1 x Mini scalpel N
- 1 x 5mL luer-slip syringe
- 1 x Secondary fixation wing and anchor



Choice of catheter lengths and sizes:

Offering practitioners, a choice when selecting a catheter to suit the patient and therapy needs.



multicath® forward

Code	Lumen	Length (cm)	Catheter (PUR) Size (Fr)	OD (mm)	Flow rate & priming volume (mL/min)		
					Dist	Med	Prox
001202063	2	6	4.5	1.5	22 0.20	-	24 0.20
001203082	2	8	4.5	1.5	19 0.22	-	22 0.22
001203123	2	12.5	4.5	1.5	15 0.25	-	18 0.25
000157508	2	8	5.5	1.85	46 0.34	-	77 0.38
001233061	3	6	4.5	1.5	14.8 0.12	7.1 0.11	8.1 0.11
001233081	3	8	4.5	1.5	14.4 0.14	6.7 0.12	7.5 0.12
001233101	3	10	4.5	1.5	13.5 0.16	5.8 0.14	6.1 0.14
001231121	3	12.5	4.5	1.5	10 0.18	3 0.16	4 0.16
006155167	3	16	7.5	2.5	63 0.38	34 0.33	36 0.38
006155207	3	20	7.5	2.7	60 0.45	30 0.34	30 0.36
000155508	3	8	5.5	1.8	27 0.22	16 0.21	17 0.24
000155512	3	12.5	5.5	1.8	24 0.24	12 0.23	13 0.23

smartmidline

smart**midline** is our CT-rated midline (up to 325psi and 7mL/s). It is simple and quick to place using the direct Seldinger technique. Suitable for a wide range of clinical indications from 2Fr to 5Fr and 4cm to 25cm, it is also an integrated extension line, which helps to reduce the risk of post insertion complications.

Code	Size (Fr)	Length (cm)	Guidewire (cm)	Max flow rate* (mL/s)	Box qty
0001281208	2	8	26	1.0	20
0001281310	3	10	26	1.5	20
0001281315	3	15	40	1.0	20
0001281415	4	15	50	5.0	20

\*Viscosity 11.8cP



CVC Webinar

European Specialist in Veterinary Anaesthesia and Analgesia pinpoints potential mistakes and varying techniques of CVC placement in this video guide. Scan the QR code for more details.

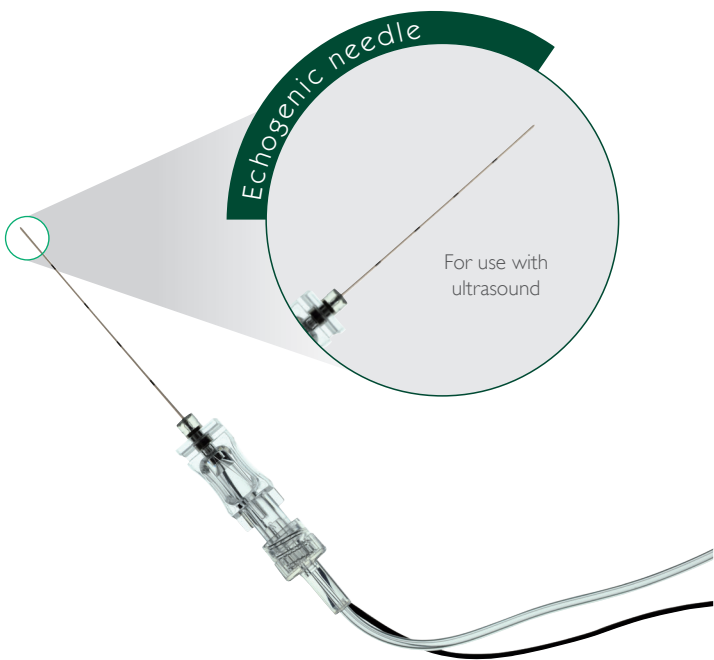


# REGIONAL NERVE BLOCKS

## echoplex needles

Designed for clinicians who use ultrasound and stimulation techniques to locate the peripheral nerve sheath.

Code	Size (G)	Length (mm)	Box qty
006194103	21	100	20
006194123	21	120	20
006194153	21	150	20
006194253	23	25	20
006194353	23	35	20
006194503	22	50	20
006194853	21	85	20



## plexygon

Nerve stimulator allowing nerve location through the emission of a low intensity electrical current.

Code	Description	Box qty
750131	plexygon nerve stimulator	1
08750302A	Replacement cable (Red and black)	1
00390015	Aseptic handling pouch 12 x 40cm	80



### Plexygon Nerve Stimulator Webinar

European Specialist in Veterinary Anaesthesia and Analgesia pinpoints the benefits of using the Plexygon Nerve Stimulator in this video guide. Scan the QR code for more details.





“We have experienced fewer problems with blood pressure, and we require lower levels of opiates. The dog can reliably go home the same day because the effects will last for around 8 to 12 hours.”

**Mark Holmes**

Clinical Director, Avondale Vets

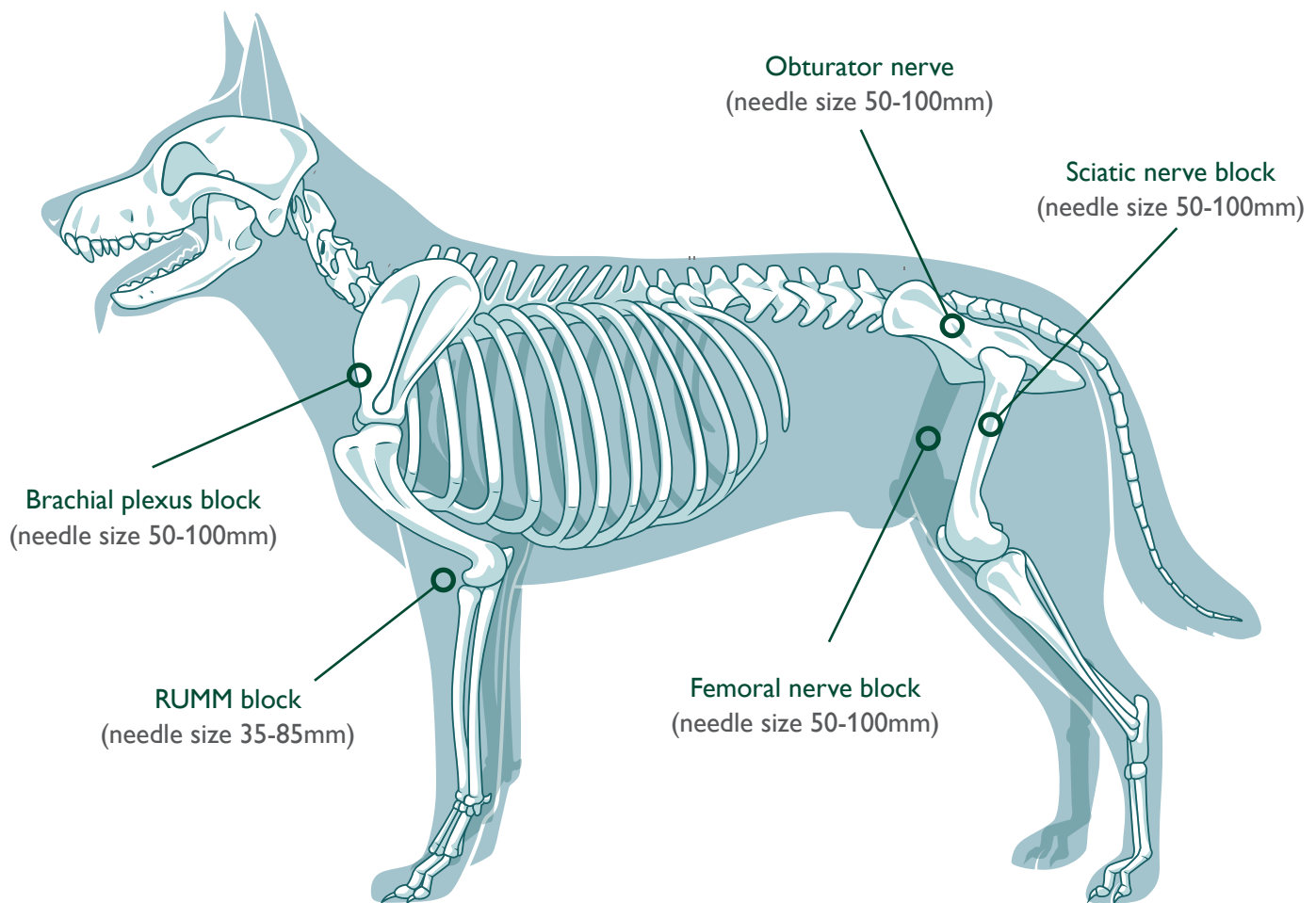


Image shown is for illustration purposes only.










Speak to a product specialist about trialling a device. Various purchase options are available.

# CANNULA

## intraflon non-ported

A short IV cannula in PTFE with transparent ultra-thin walls to optimise flow rate.



Code	Colour	Size (G)	ID (mm)	OD (mm)	Length (cm)	Max flow rate* (mL/s)	Box qty
00012106		24	0.4	0.7	18	18	50
00012108		22	0.5	0.8	28	24	50
00012110		20	0.7	1.0	30	52	50
00012113		18	0.9	1.3	38	100	50
00012116		16	1.2	1.6	52	174	50
00012121		14	1.6	2.1	52	260	50
00012127		12	2.2	2.7	52	450	50

## intraflon non-ported longer

Code	Colour	Size (G)	ID (mm)	OD (mm)	Length (cm)	Max flow rate* (mL/s)	Box qty
00012210		20	0.7	1.0	36	50	50
00012213		18	0.9	1.3	47	95	50
00012216		16	1.2	1.6	60	170	50
00012221		14	1.6	2.1	80	250	50
00012227		12	2.2	2.7	80	430	50



## Haemodynamic Monitoring

Mostcare Up is haemodynamic monitoring at its most effective. With accurate patient monitoring minute by minute, beat to beat. With its intuitive, simple to use and customisable interface, you can set up and monitor a patient's cardiac output in 60 seconds, with no need for calibration.

Mostcare Up uses a robust patented algorithm known as the Pressure Recording Analytical Method (PRAM™), giving real time data to help you make the right decisions at the right time. Our endless system has unlimited patient usage and does not require consumables, ensuring you can optimise its usage without additional cost and helps improve sustainability. Mostcare Up can also connect to your patient information systems to help you stay more efficient.

Research article 'Briganti et al A preliminary study evaluating cardiac output measurement using Pressure Recording Analytical Method (PRAM) in anaesthetized dogs' available upon request.



**Fast**

60 second setup



**Simple**

No calibration required  
Intuitive, customisable interface



**Accurate**

Robust PRAM™ algorithm  
Patented dynamic filter to enhance signal quality



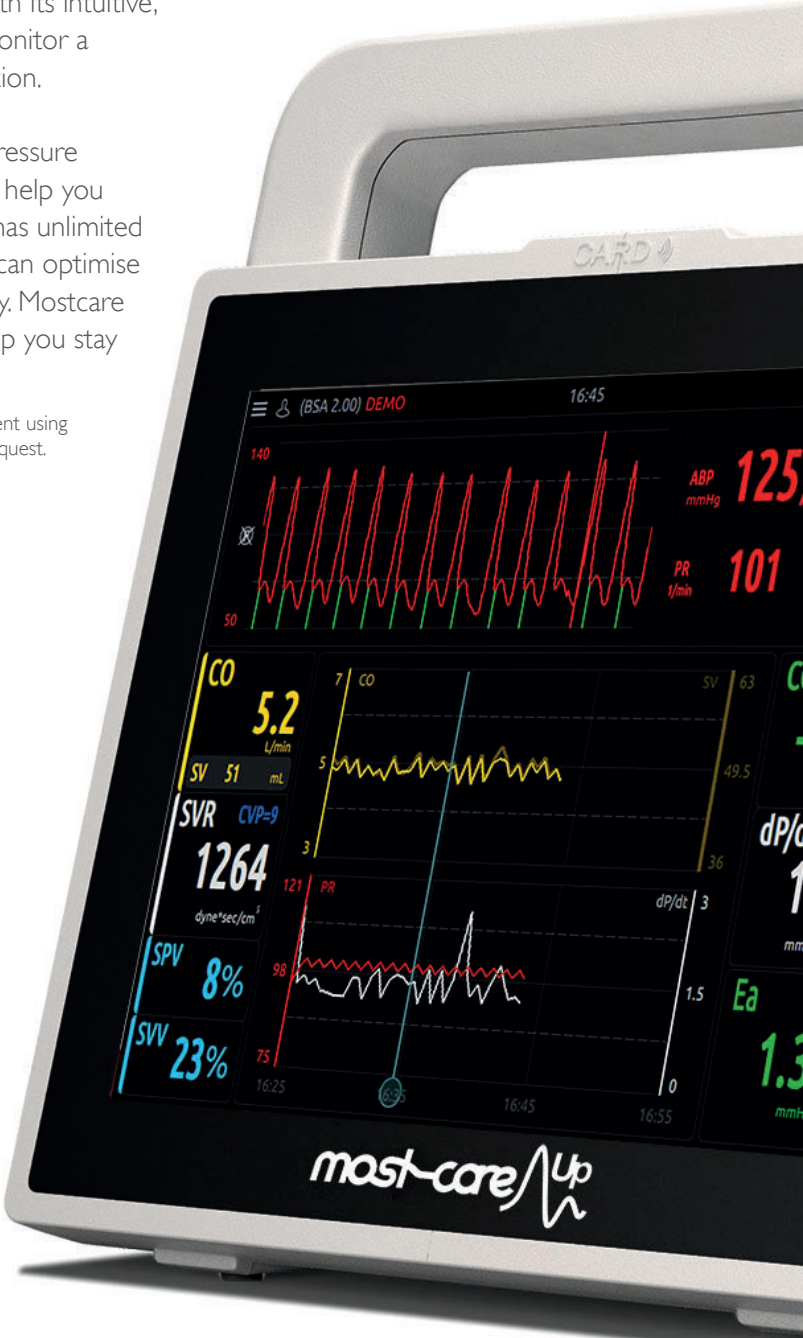
**Lifetime value**

Unlimited patient usage  
No consumables required, improving sustainability



**Data management**

HL7 compatible to enable data transfer

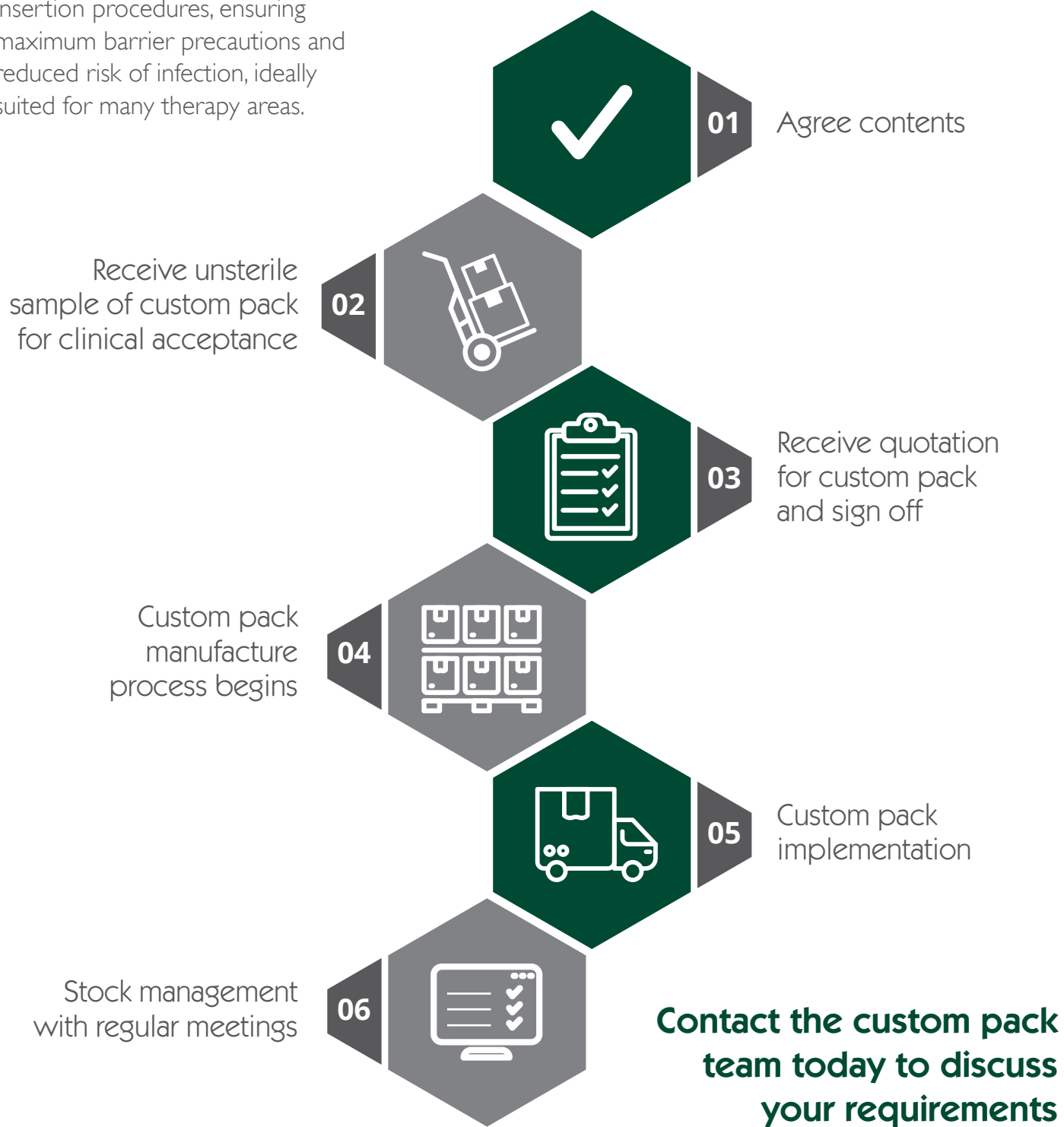


Speak to a product specialist about trialling a device.  
Various purchase options are available.

# CUSTOM PACKS

A custom pack allows you to create a high quality pack to match your local protocol, incorporating all the items you need.

Custom packs promote standardised insertion procedures, ensuring maximum barrier precautions and reduced risk of infection, ideally suited for many therapy areas.



01793 746904  
veterinary@vygon.co.uk



“

The custom packs are designed to our own specifications which is great for us.

It saves us so much time all round and is no more expensive than buying everything separately. The boxes arrive sterilised and ready to use. We get them in as and when we need them and it's just a great service.

As well as saving us time in ordering the products separately from different suppliers, we also save wear and tear on the autoclaves. We want to spend as much of our time with our patients and their owners as we can so the packs are just perfect for what we need.”

### Nicola Casement

Referral Veterinary Nurse, Manchester Veterinary Specialists

## Why choose custom packs procedure packs?

From concept to implementation we will work with you to develop a high quality pack to meet your individual needs, giving you peace of mind throughout:

- Standard practice
- Sterilisation
- Warehousing & distribution
- Implementation & training
- Stock management



Reduce waste



Save money



Reduce carbon footprint



Save on set up time



# ONCOLOGY

## Qimono Qimooctopus

Qimooctopus with Qimo female and Qimo male is a multi-purpose catheter accessory, a double lumen IV extension tube with needleless connectors allowing intermittent injections or continuous infusions of fluids or medications.

Code	Box qty
007231221	1



## Qimono Qimocap

Qimocap is a vial access cap fitted with Qimo female.

Code	Size (mm)	Box qty
00721901	14	50
00721902	20	25



## Qimono Qimospike V

Qimospike V is a vented spike for vials fitted with Qimo female.

Code	Box qty
007217040	25



## Qimono Qimo male

Qimo male is a disinfectable closed needle-free safety connector.

Code	Box qty
00721091	50



## Qimono Qimo female

Qimo female is a multi-purpose, closed, needle-free, I.V. connection device.

Code	Box qty
00721002	50



**MOSH**  
TESTED  
AND PASSED

# ONCOLOGY PPE

## Non-sterile Chemotherapy gowns

Code	Description	Box qty
VHU69602	Non-sterile thumb loop Chemo gown L	100 (bagged in 10s)
VHU69603	Non-sterile thumb loop Chemo gown XL	100 (bagged in 10s)

## Sterile Chemotherapy gowns

Code	Description	Box qty
VHU44690	Aero chrome gown XL	28
VHU44693	Aero chrome gown L (Extra long)	30
VHU44694	Aero chrome gown XL (Extra long)	30

## Chemotherapy FFP3 facemask

Code	Description	Box qty
VHU62360	FFP3 Chemo mask with valve	20

## Chemotherapy gloves

Code	Description	Box qty
VHU50600M	Purple Nitrile-xtra glove XS	50
VHU50601M	Purple Nitrile-xtra glove S	50
VHU50602M	Purple Nitrile-xtra glove M	50
VHU50603M	Purple Nitrile-xtra glove L	50





# NUTRISAFE2® - SAFE ENTERAL FEEDING SYSTEM

**nutrisafe2® is Vygon's complete and unique system for secure enteral delivery in small animals.**



## Safe

Nutrisafe2 is incompatible with standard 6% luer taper devices. The lockable non-luer system reduces the risk of misconnection errors with no change to normal practice. The Nutrisafe2 connector and the plastic cap tether have been designed to ensure it is safe for even your smallest patients.



## Secure

The lockable system provides additional security. Accidental disconnection is virtually impossible. To disconnect the system, you do not need to use force, you simply unscrew the device.



## Confident

Colour-coded for easy recognition and size identification. The Nutrisafe 2 range features purple hubs and size related colour-coded caps, reducing the risk of accidentally attempting to connect devices intended for use with IV lines. The unique Nutrisafe 2 secure lockable non-luer system gives you peace of mind that your patients are safe from misconnections and wrong route drug errors.



## Comfortable

The smooth shape was chosen specifically to eliminate sharp edges that could cause discomfort and markings on delicate skin.



## A Complete Solution

Vygon offers a wide range of syringes, extension tubes, drawing-up straws, and accessories. Numbered graduations every centimetre aid placement and monitoring, with a rounded tip providing atraumatic insertion.

With continual support offering team training and technical assistance to support best practice within your practise.



# ENTERAL FEEDING

## nutrisafe2® PVC nasogastric feeding tubes

Code	Size (Fr)	Length (cm)	Box qty
DEHP-free PVC Feeding Tube – Short-term use			
000364042	4	40	25
000361042	4	50	50
000363042	4	75	25
000364052	5	40	25
000361052	5	50	50
000363052	5	75	25
000364062	6	40	25
000361062	6	50	25
000363062	6	75	25
000362062	6	125	50
000364082	8	40	25
000361082	8	50	25
000363082	8	75	25
000362082	8	125	25
000363102	10	75	25
000362102	10	125	25
000363122	12	75	25
000362122	12	125	25

## nutrisafe2 drawing-up straws

Drawing-up straws allow the filling of nutrisafe2 syringes with feed or medication from all sizes of containers and bottles.

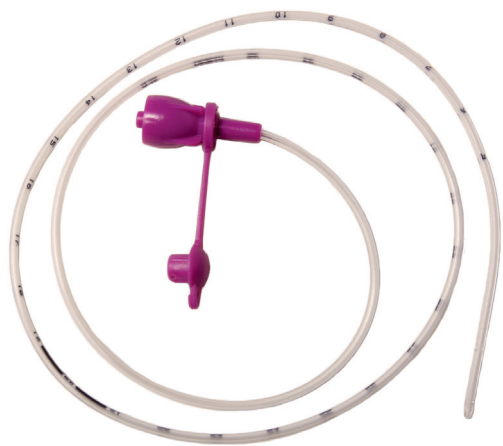
Code	Length (cm)	ID (mm)	OD (mm)	Box qty
000817152	15	2.0	3.3	50
000817153	15	3.0	4.2	50



## nutrisafe2 PUR nasogastric feeding tubes

The radiopaque feeding tubes come with size colour-coded cap and are suitable for medium-term use.

Code	Size (Fr)	Length (cm)	Box qty
PUR Feeding Tube - Medium-term use			
001361042	4	50	50
001363042	4	75	25
001361052	5	50	50
001363052	5	75	25
001362052	5	125	25
001361062	6	50	50
001363062	6	75	25
001362062	6	125	25
001361082	8	50	50
001363082	8	75	25
001362082	8	125	25
001361102	10	50	50
001363102	10	75	25
001362102	10	125	25
001363122	12	75	25
001362122	12	125	25
001362142	14	125	25
001362182	18	125	25



## nutrisafe2 PUR feeding tubes with Stylet

Code	Size (Fr)	Length (cm)	Box qty
PUR Feeding Tube - Medium-term use			
0013631421	14	75	25
0013631621	16	75	25
0013620822	8	125	25

## nutrisafe2 extension tubes

This extension tube gives extended connections to pumps. It can only be used with feeding tubes featuring a Nutrisafe2. connection.

Code	Length (cm)	Length (mm)	Box qty
000368102	100	1.5-2.5	50
000817153	150	3.0-4.00	50

## nutrisafe2 syringes

nutrisafe2 syringes have a purple plunger to aid instant identification as enteral devices. For safety they only connect with the other items in the nutrisafe2 range. They are graduated and available in a wide range of sizes.

Code	Description	Box qty
1015014	nutrisafe2 1mL syringe	100
1015024	nutrisafe2 2.5mL syringe	100
1015054	nutrisafe2 5mL syringe	100
1015104	nutrisafe2 10mL syringe	100
1015214	nutrisafe2 20mL syringe	80
1015604	nutrisafe2 60mL syringe	60



# THEATRE

## Mini Red-O-Pack

120mL container in PE/PVC for drainage of small volumes after surgery.  
Supplied with Redon-type suction drain, Alene needle, and tape.

Code	Description	Suction drain size (Fr)	Container (mL)	Box qty
WKRAP0614101251	Mini Red-O-Pack	6	120	1
WKRAP0814101251	Mini Red-O-Pack	8	120	1



## Drape towels with adhesive

Two-layer general purpose sterile adhesive-edge drapes available in a variety of sizes.  
Adhesive edges provide an effective seal, preventing contamination of the surgical field from beneath the drape.

Code	Description	Size (cm)	Box qty
00412603	Drape towels with adhesive	80x90	50
00412605	Drape towels with adhesive	90x100	50
00412905	Drape towels with adhesive	180x200	20



## Universal drape set

Set of four sterile adhesive-edged two-layer drapes suitable for many veterinary procedures including laparotomy. Ideal for small to medium sized veterinary patients.  
Suitable drape set for ventral midline ovariohysterectomy in the bitch.

Code	Description	Size (cm)	Box qty
00463912	Adhesive-edged utility drapes x4	70x75	30
004029023	Drape pack with trolley drape: x1 trolley drape – 140x190cm x2 Drape Towel with adhesive - 90x100cm x2 Drape Towel with adhesive – 30x40cm	-	18

## Gowns

Sterile Surgical Gowns made from SMS material with hand towels, raglan sleeves, book folded for aseptic donning of gown.

Code	Description	Box qty
VHU11783	Sterile Surgical Gown Large with hand towels	40
VHU11784	Sterile Surgical Gown Extra Large with hand towels	40
VHU90002	Sterile Surgical Gown Small with hand towels	36
VHU90112	Sterile Reinforced surgical gown Large with hand towels	32
VHU90142	Sterile Reinforced Surgical gown extra large with hand towels	30
VHU90143	Sterile Reinforced Surgical gown Extra Large – Extra Long with hand towels	32



## Fenestrated drape towels

Code	Description	Size (cm)	Box qty
00344545	Fenestrated towel with adhesive	45x45	80
00347575	Fenestrated towel with adhesive	75x75	30
00347590	Fenestrated towel with adhesive	75x90	30
003410100	Fenestrated towel with adhesive	100x100	30



## Bulb syringe

Code	Description	Size (mL)	Box qty
00045100	Bulb syringe	100	30

## Trolley / table drapes

Code	Description	Size (cm)	Box qty
00412822	Trolley/Table cover with adhesive strip	120x140	65
00412825	Trolley/Table cover with adhesive strip	140x190	42
00412826	Trolley/Table cover with adhesive strip	160x240	33



## Surgical scrub brushes

Code	Description	Box qty
00090200	Chlorhexidine surgical scrub brush	25
00090100	Iodine surgical scrub brush	25
07090300	Dry surgical scrub brush without nail pick	25

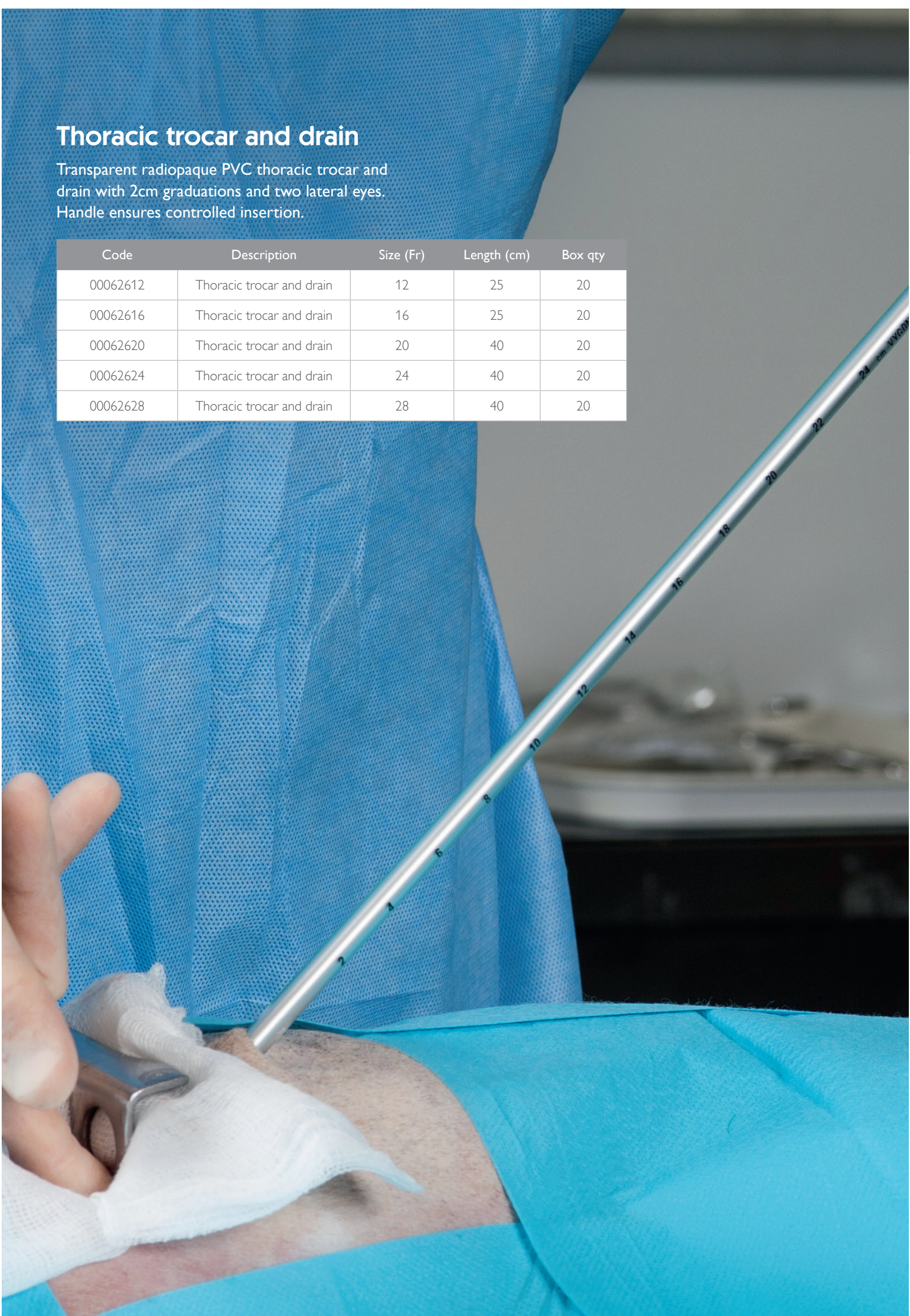




# Thoracic trocar and drain

Transparent radiopaque PVC thoracic trocar and drain with 2cm graduations and two lateral eyes. Handle ensures controlled insertion.

Code	Description	Size (Fr)	Length (cm)	Box qty
00062612	Thoracic trocar and drain	12	25	20
00062616	Thoracic trocar and drain	16	25	20
00062620	Thoracic trocar and drain	20	40	20
00062624	Thoracic trocar and drain	24	40	20
00062628	Thoracic trocar and drain	28	40	20





# AITECS INFUSION PUMPS

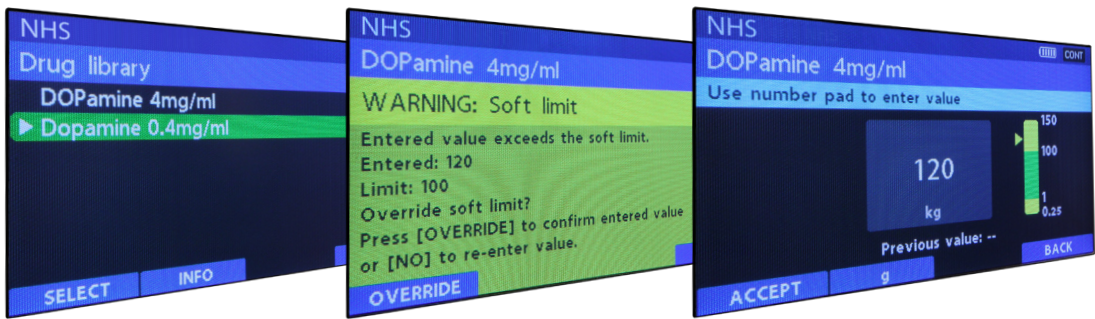
## aitecs 3017 large volumetric pump

The aitecs 3017 large volumetric pump is a configurable multi-purpose infusion pump, with a common user interface to the aitecs range. It provides patient safety by facilitating use from basic infusions to advanced clinical applications. It can be used as a stand-alone device, or be stacked together with other aitecs pumps on the aitecs infusion docking station, providing connectivity compatible with the aitecs infusion management system, Patient Data Management Systems (PDMS) and Hospital Information Systems (HIS) via the open system architecture.

Code	Box qty
VMM3017TCI	1



- **Drug error reduction software** – Infugard software protects against IV medication errors at point of infusion - we can customise drug protocols per department/areas of care/species/drug type. – Clinical advisories alerts for drugs can also be added based on hospital protocol/requirements



- **Customised pump menus** – Flexibility to configure options menu to support changing user requirements.
- **Service and maintenance** – All servicing and maintenance managed by in-house technical team, on-site servicing to reduce disruption to clinical teams.
- **Install and on-site training** – Full install and on-site training for hospitals and teams with technical support to ensure smooth transitions to new equipment.



We offer our pumps at no cost as the charges are offset against the consumables you purchase.

aitecs 2017 syringe pump

The aitecs 2017 syringe pump is a configurable and versatile syringe pump offering enhanced safety in all clinical environments. The common user interface across the aitecs range promotes ease of use and simplifies device training needs, it can be used as a stand-alone device or be stacked together with other aitecs pumps on the aitecs infusion docking station providing connectivity compatible with the aitecs infusion management system, Patient Data Management Systems (PDMS) and Hospital Information Systems (HIS) via the open system architecture.

Code	Box qty
VMM2017TCI	1



- **Clear display** shows all the information needed to monitor the infusion including the pharmacokinetic model, calculated plasma concentration and effect site concentration as well as the target effect site concentration – the infusion information and graph mode complete the display.
- **Target Control Infusions (TCI)** In TCI mode, the aitecs pump controls and maintains a steady therapeutic level of drug delivery.

Beths  
propofol for  
dogs TCI model  
available

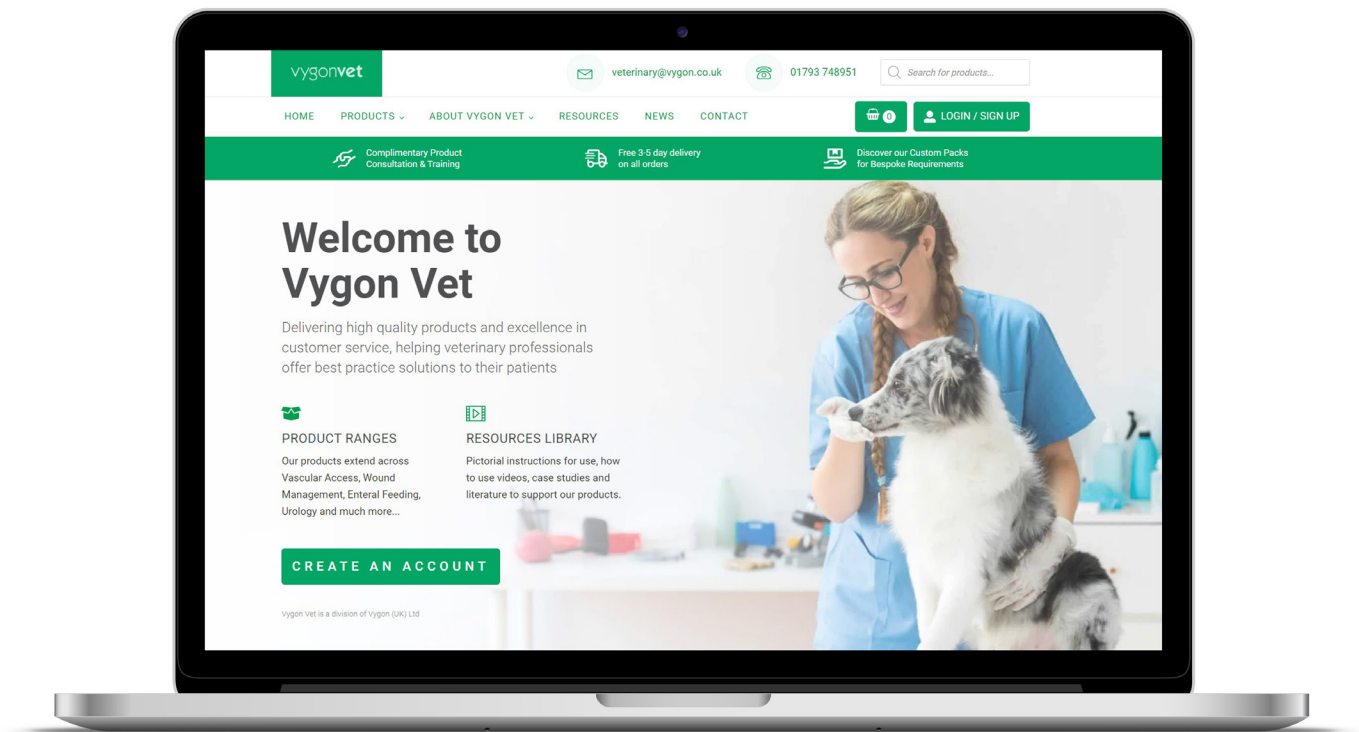
TIVA sets

Total intravenous anaesthesia from pump to patient.



Vygon codes	Number of lumen	Detachable extension line	Gravity line		High flow drug line		Low flow drug line		Box qty
			Length (cm)	Priming vol (mL)	Length (cm)	Priming vol (mL)	Length (cm)	Priming vol (mL)	
VAN7300A	Triple	No	8.0	0.5	10	0.6	12	0.3	50
VAN7200A	Double	No	8.0	0.5	10	0.6	-	-	50

- Longer options are available



# Have you registered?

Sign up to an online account today and reap the benefits



## SAVE TIME

The site features all our products for instant online purchases.



## ACCOUNT SPECIFIC PRICING

Having an account witha Vygon Vet can save you up to 20% on certain products.



## REPEAT ORDERS WITH EASE

It takes just one click to repeat orders from previous purchases.

Take a look  [vygonvet.co.uk](https://vygonvet.co.uk)



# OUR DISTRIBUTORS

You can also buy direct from our distributors



[covetrus.co.uk](http://covetrus.co.uk)



[onlinestore.mwiah.co.uk](http://onlinestore.mwiah.co.uk)



[veterinarysales.co.uk](http://veterinarysales.co.uk)



[dmsveterinary.com](http://dmsveterinary.com)



[imseuro.co.uk](http://imseuro.co.uk)



[jakmarketing.co.uk](http://jakmarketing.co.uk)



[nvswb.co.uk](http://nvswb.co.uk)



[pioneervet.co.uk](http://pioneervet.co.uk)



[vet-direct.com](http://vet-direct.com)



11/2025 - DXIB0039015 V00272-005 v2

FOR FURTHER INFORMATION, PLEASE CONTACT: [info@vygon.co.uk](mailto:info@vygon.co.uk)

The specifications shown in this leaflet are for information only and are not, under any circumstances, of a contractual nature. This brochure has been printed on responsibly sourced and sustainable material. To help us reduce our carbon footprint all of our literature is available electronically either from your Product Specialist, on our website or by emailing [info@vygon.co.uk](mailto:info@vygon.co.uk)

VYGON (UK) LTD, THE PIERRE SIMONET BUILDING, V PARK,  
GATEWAY NORTH, LATHAM ROAD, SWINDON, WILTSHIRE SN25 4DL  
RECEPTION: +44 (0)1793 748800 [WWW.VYGON.CO.UK](http://WWW.VYGON.CO.UK)

 [@vygonuk](https://www.instagram.com/vygonuk)

